



# COASTAL LIVING PRODUCTS

*Durable Beauty*  
Railing built to last.



*Beautiful. Simple. Affordable.*

## Coastal Living Products Railing has it all.

Combining striking good looks, easy installation, and affordable price points, Coastal Living Products appeals to homeowners and professionals alike.

Our railing comes in a variety of sizes, heights and design configurations making it easy to achieve the look you want. The low-maintenance PVC vinyl construction also provides peace-of-mind with aluminum-reinforced strength and durability that meets national, residential, and commercial building codes.

Coastal Living Products is made right here in the U.S.A. and our high quality workmanship is backed by a lifetime transferable warranty.



**Coastal Living Products Railing is ICC Approved PER-18119**





Railing that  
looks great for  
years to come.  
You'll never  
paint, stain or  
seal again!

# *A Foundation of Style*



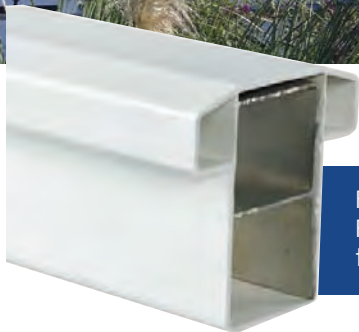
**COASTAL  
LIVING  
PRODUCTS**

Coastal Living Products comes in two basic styles on which to build. The classic good looks of the Traditional style or the clean lines of the Contemporary style.

Choose your color, baluster style, and post cap design to create your own look.



**TRADITIONAL**



For strength you can depend on, Coastal Living Products is reinforced with aluminum in both traditional and contemporary styles.



- All fastening brackets are hidden for a clean look
- Available in Level and Stair sections
- Both profiles are available in 5', 6', 8' and 10' sections and are pre-routed for balusters



## CONTEMPORARY

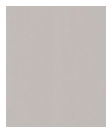
**No painting or staining. Choose from White, Tan, Adobe or Mocha Walnut.**



White



Tan



Adobe



Mocha  
Walnut

*NOTE: Actual colors may vary due to the printing process. Please ask for color samples.*



# Options Abound

## BALUSTERS

Achieve the style you want by combining Traditional or Contemporary profiles with your choice of color and baluster options. Balusters come in square picket, round, glass picket and glass panel styles. For an added touch of elegance, choose our wood laminated top rail.

*(Styles are shown for example only - not all styles shown)*



Traditional Adobe  
with Square Picket



Traditional Tan with  
Square Picket



Traditional Railing with  
Wood Laminated Top Rail  
and Round Baluster



Contemporary  
Mocha Walnut  
with Square Picket



Contemporary  
Mocha Walnut with  
Round Balusters



Traditional  
with Glass Panel



Contemporary  
with Glass Picket





**Commercial Rail** is our commercial-grade railing with aluminum in the top rail. Bottom rail aluminum insert available. It is available in a 42" height.



Commercial Rail with Square Picket



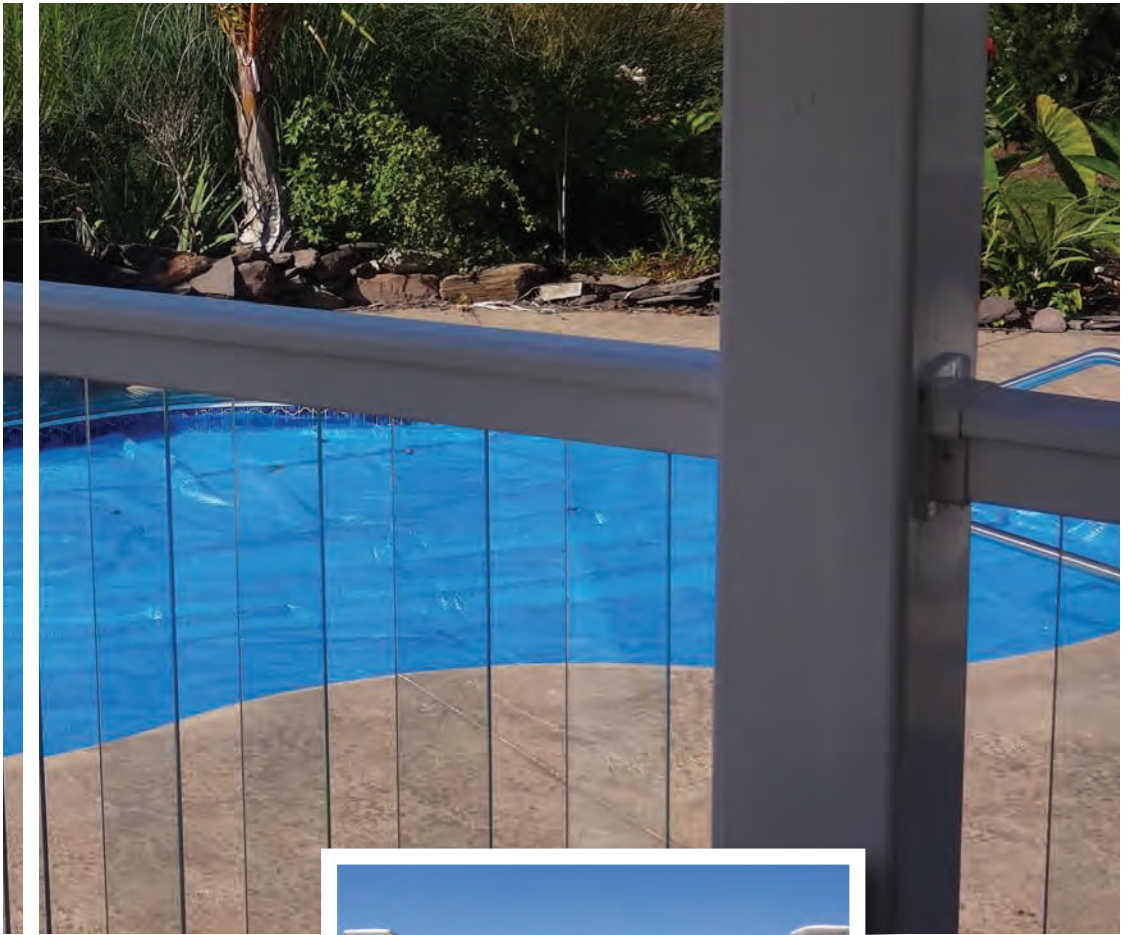


## *Rail With A View*

### **Glass Balusters**

Don't miss a thing! Enjoy the surrounding scenery with glass pickets or panels in place of more traditional baluster styles. The thick, tempered glass adds sophistication to your outdoor setting while providing all the safety and security you need from your railing.







## *Outdoor Living* **PERGOLA**



Dress up your outdoor living space with Coastal Living Products Pergola. This super low-maintenance structure will add distinctive style to any outdoor setting.

Pergolas add visual interest to a garden or provide shade for any area where you spend time outdoors. They also provide structure for decorative climbing plants.

Create a more private space by adding lattice panels to the pergola.

# *A Customized Look*

## POST CAPS

Choose from a variety of decorative post caps and solar lights to create a custom look suited to your personal tastes. *(Styles are shown for example only - not all styles shown)*



New England



Ball



Flat External



Gothic



4" White  
Solar Cap



4" Black  
Solar Cap



Create a mood for your outdoor space with lighted post caps.





## *Structural Solutions*

### PORCH POSTS

Coastal Living Products provides structural post options that come in colonial or square design options. Posts are available in 4" and 5" sizes and include all instructions, mounting plates, hardware, and structural inserts.

#### **108" porch Post average ultimate performance test results**

---

4" Post-Axial load: 7,883 lbs • Mounting uplift plate load: 1,637 lbs

---

5" Post-Axial load: 11,571 lbs • Mounting uplift plate load: 1,854 lbs

---



1 Piece New England Trim



2 Piece Snap Trim

4" Post Mount



## Colors:



White

Tan



Adobe

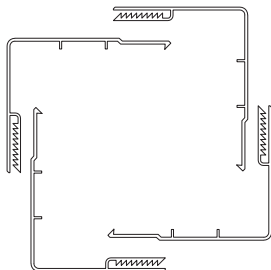
Colors may not be exactly as shown. Please call for color samples if needed.

## Structural Solutions

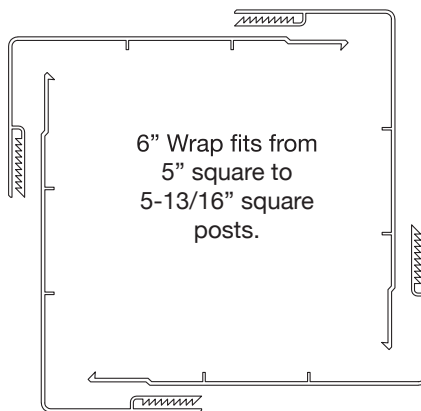
### POST WRAPS

Finishing treated posts is a snap with our PVC Column Wraps. The patented snap design allows quick, easy installation around structural supports. The wrap protects your posts and eliminates peeling, rotting and denting. Snap trim is available as well to provide a finished look.

*Ideal for any 4" x 4" or 6" x 6" post. The unique design helps hide posts that are not perfectly square or vary in size. Wrap around your existing post and snap together.*



4" Wrap fits from 3-1/4" square to 4-3/8" square posts.



6" Wrap fits from 5" square to 5-13/16" square posts.



Garbage Enclosure

*Protection + Privacy*

## ENCLOSURES

Coastal Living Products Enclosures provide long-lasting durability and easy clean up and maintenance year after year.

Hide unsightly trash cans and protect them from wind and wildlife with our sturdy enclosures. Clean up after a day on the beach in the privacy of our stylish shower enclosures.



Shower Enclosure





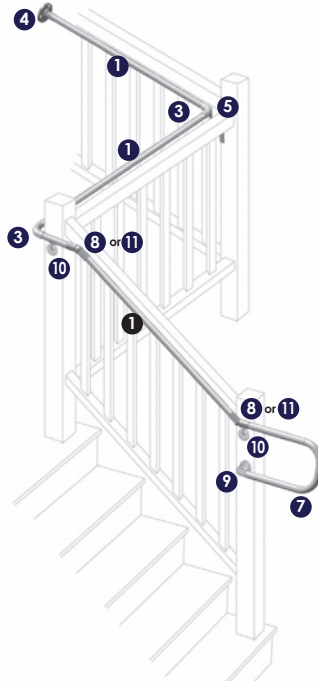
# ADA HAND RAILS

Our railing system complies with American Disability Act requirements for grippable hand rails.

## Typical ADA Railing Installation

### Components:

- 1 ADA Handrail w/Aluminum Insert
- 2 6" Straight Joiner
- 3 4" Inside/Outside Corner
- 4 Straight End Wall Bracket
- 5 Inside Corner Bracket
- 6 End Cap
- 7 P-Loop Return
- 8 6" Adjustable Joiner
- 9 90° Quick Return Bracket
- 10 Stand Off Bracket
- 11 External Adjustable Joiner



Choose from White, Tan, Adobe or Black.



White



Tan



Adobe



Black

*NOTE: Actual colors may vary due to the printing process. Please ask for color samples.*

## RAIL KITS

Coastal Living Products Kits include all fasteners and brackets. Everything you need for quick, easy installation!





## Coastal Living Products:

Coastal Living Products creates jobs here at home and maintains greater quality control by manufacturing all our products in the USA. This allows us to reach our fundamental goal: manufacture premium products without the inflated cost.

We provide design flexibility with a wide variety of products from our immense and diverse inventory. Not only does Coastal Living Products supply material domestically, we also export a large volume of material to countries worldwide. Our PVC is 100% recyclable and minimal waste is created.

We work closely with homeowners, business owners, contractors, community organizations and safety groups. Our industry experts have the experience to provide solutions to satisfy all of our customer needs.

Coastal Living Products is covered by one of the toughest warranties in the industry –

**a Transferable Lifetime Limited Warranty** – making it the right choice for any homeowner or business.

Supplied by:



**For more information, contact us today!**

**[www.CoastalLivingProducts.com](http://www.CoastalLivingProducts.com) • [info@CoastalLivingProducts.com](mailto:info@CoastalLivingProducts.com)**